

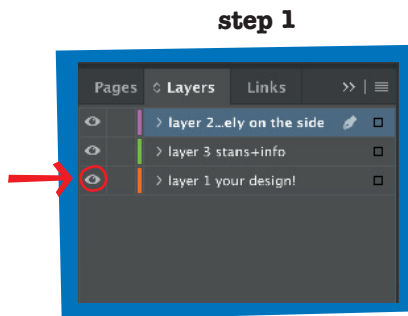
TONY'S CHOCOLONELY® DESIGN YOUR OWN WRAPPER

(in our 180 gram-Classics)

step 1

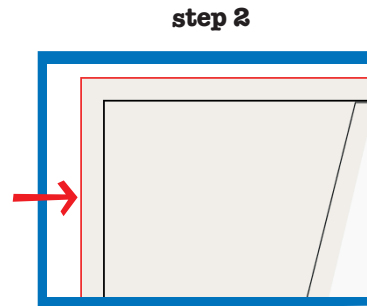
Time to design- uh shine! Open the file TC_wrapper_Illustrator_ENG and draw, paint, dodge, burn and clone stamp your heart out in Indesign. Place your design in **layer 1** (orange layer).

*Want to see your design without the outlines
Then take off a layer by clicking the eye-icon
from **layer 3**, baby..*



step 2

Let the background bleed to the red lines.



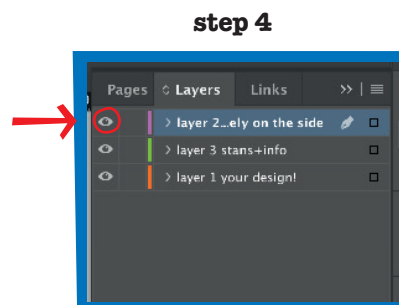
step 3

Remember: the white area is a no go. That's where we'll print the ingredients for you.



step 4

Want to have Tony's Chocolonely on the long side of your wrapper? Make sure the logo is visible by displaying **layer 2**.

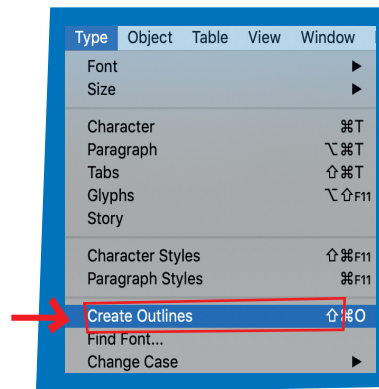


step 5

step 5

Make sure you transform the text in outlines and that images are placed, not linked.

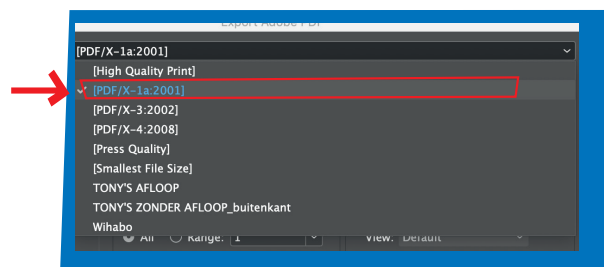
Text outline? First select the text and go to **type/create outlines**.



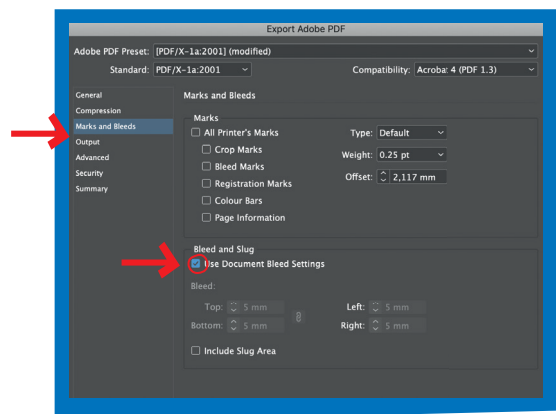
step 6

step 6

Is your wrapper ready to rumble? Save it as PDF/X-1a-2001.



Go to marks and bleeds and click on **use document bleed settings** (that's 5mm). And take care that no print marks nor white edges are to be seen.



The format of your PDF document must be 245 x 235 mm.

Fancy your wrapper in English inside and out?

Send your PDF document to mijntony@tonyschocolonely.com and please let us know you want the text to be in English. Be aware the ingredients always will be in Dutch due to food regulations.

Check out that you follow these guidelines

- Use only CMYK colours (no RGB or Pantone colours).
- Want your quality high? Use 300 DPI! (or 225 DPI).
- We only accept PDF documents. Only one wrapper per PDF document. So if you have 10 different designs, we want to receive 10 different PDF files.
- Finally, always remember: what you see is what you get.
- Wanna use black? use CMYK 30-30-30-100
- Check the error proof document

Have you checked out all these points and the error proof document? Then we can say 'Bob is your uncle'.. if Bob is your uncle.

**Bob..
who is Bob?**

